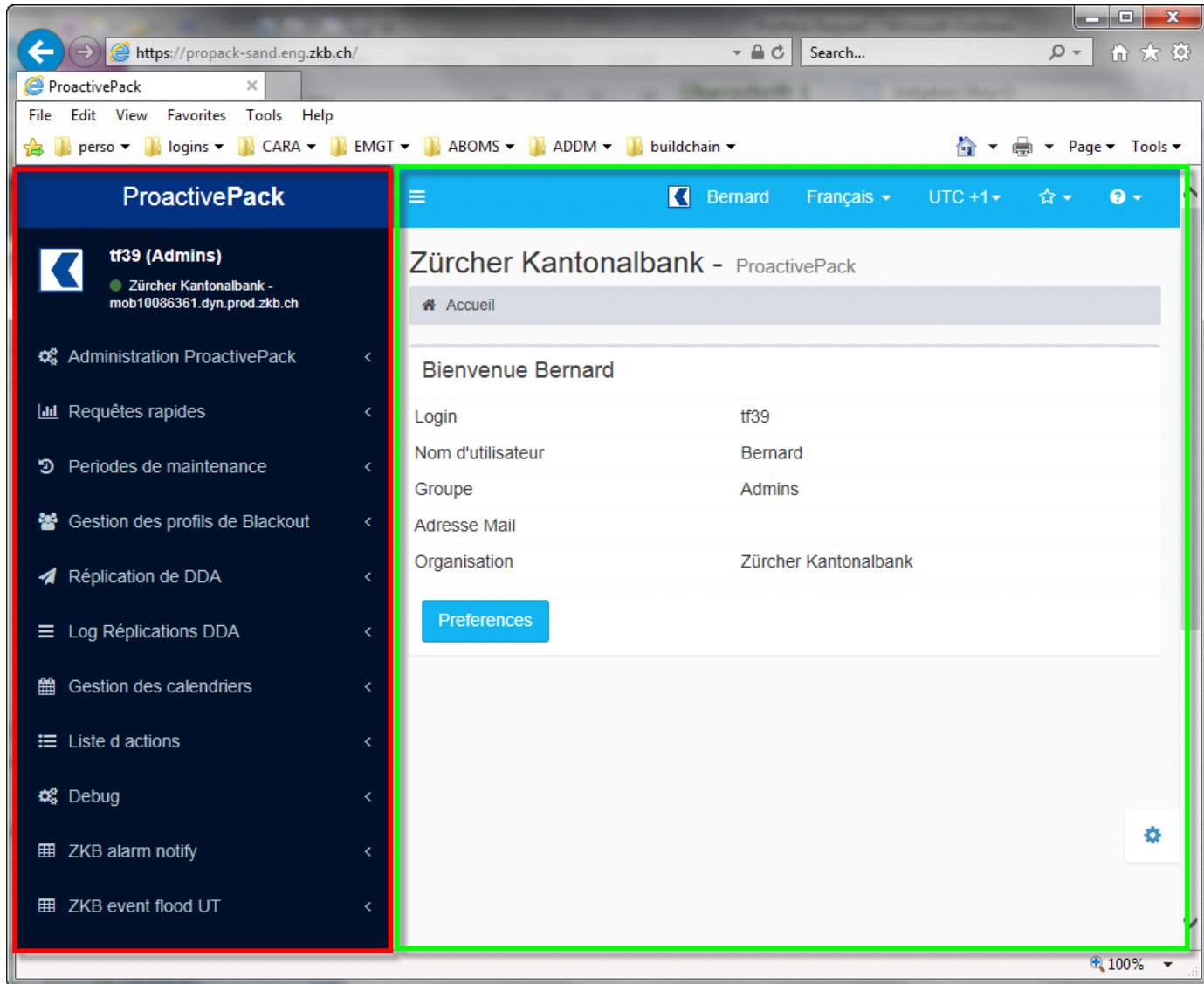


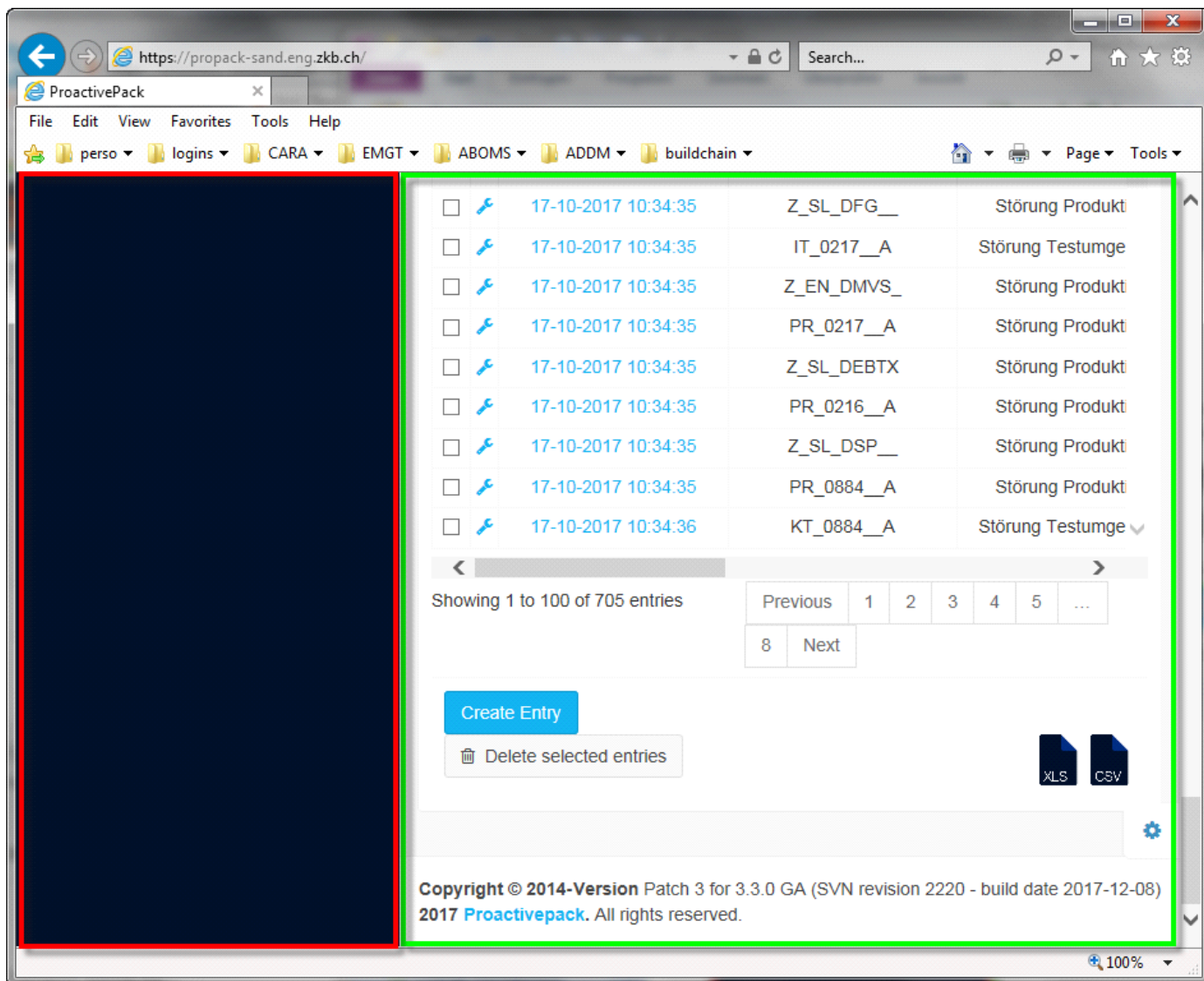
# ProPack Request

mardi 9 janvier 2018  
15:00

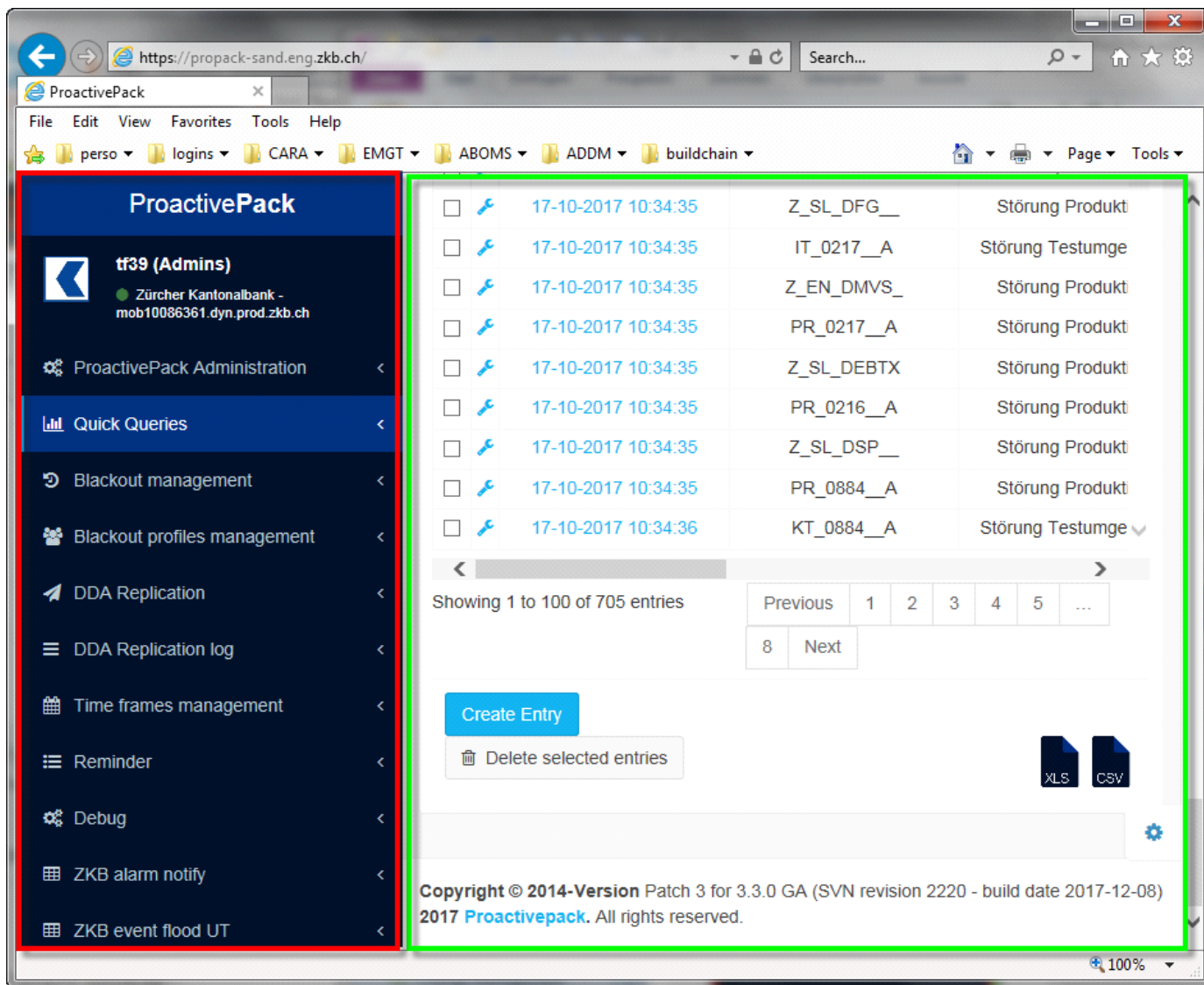
In the ProPack GUI, there are basically 2 "frames", on the left-hand side, the menus highlighted with the red colour, on the right-hand side the content highlighted with the green colour.



The use case is content that is much longer than the size of the window. For instance, we have a custom menu item "ZKB INC group enrichment" that contains hundreds of lines. Let's scroll down to the bottom of the list, and let's look at the window.



We now observe that the left-hand side no longer contains the menus. When you scroll down, both sides, the red and green, scroll down simultaneously. The request is that when you scroll down, only the green part, the content, scrolls along, but the red part, the menu, don't move. So we would like to have this situation:



Both window sides should be independant of each other. If the left-hand side contains more menus than can be displayed on the screen, the left-hand side should get a separate vertical scroll bar.

adfdfdasfas